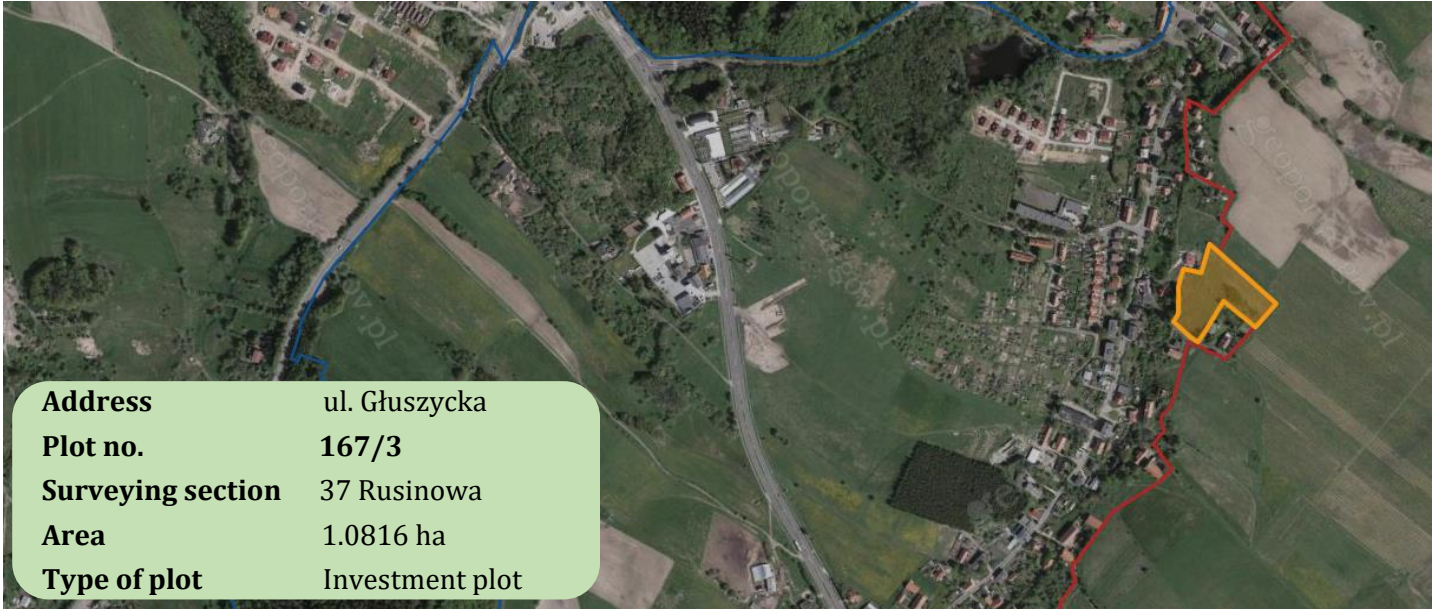


# WAŁBRZYCH



**Address** ul. Głuszycka  
**Plot no.** 167/3  
**Surveying section** 37 Rusinowa  
**Area** 1.0816 ha  
**Type of plot** Investment plot

## Condition

Undeveloped plot

## Owner

The Wałbrzych Commune – real estate resource of the commune

## Location

The area is located in the immediate vicinity of one-family and multi-family buildings

## Situation

### Distance from border crossings

Poland and Czechia: Kudowa Słone - 72 km, Golińsk - 21 km, Lubawka – 36 km,  
Poland and Germany: Zgorzelec -129 km

**Distance from European capitals:** Warsaw - 434 km, Prague - 192 km, Vienna – 359 km, Berlin – 334 km

**Distance from airports:** Wrocław – Strachowice international airport 74km, Świebodzice – light aircraft landing ground – 6 km.

**Distance from the Highway A-4 – 40 km**

## Valid zoning plan

No

## Access to the plot

The property is communicated with the Voivodship Road 381 by hard-surfaced roads.

## Zoning

According to the Study of conditions and directions of spatial development of the City of Wałbrzych adopted by the Wałbrzych City Council Resolution no. XI/154/99 of June 30, 1999 amended by the Wałbrzych City Council Resolutions no. XII/142/03 of July 10, 2003 and no. XXI/180/11 of November 28, 2011 the plot is located in the area marked with the symbol L 3.10. The development directions for the plot are as follows: residential, production and service development, whereas spatial development directions indicate the maintenance of the current function of the area. Additionally, the amendment to the study accepted in 2008 qualifies the whole above-mentioned area as a permissible location of large format commercial facilities with a sales area below 2000 m<sup>2</sup>

## Available technical infrastructure

Plot without utilities.

## Form of disposal:

Open tender sale

## Detailed information

### Regarding disposal of properties

Property and Infrastructure Office of the Municipal Office in Wałbrzych

Kopernika Street 2, 58-300 Wałbrzych, Poland  
phone:+48 74 66 55 240, +48 74 66 55 221,+48 74 66 55 233,

email: m.krol@um.walbrzych.pl,

a.winiarska@um.walbrzych.pl

### Regarding Local Zoning Plan

Revitalisation and Area Development and Planning Office of the Municipal Office in Wałbrzych

Rynek 23, 58-300 Wałbrzych, Poland  
phone:+48 74 64 44 721,+48 74 64 44 722,+48 74 64 44 724,

email: planowanie@um.walbrzych.pl

## MUNICIPAL OFFICE OF WAŁBRZYCH

The Commune Centre of Investor and Exporter Service

(Strategic Management, Ownership Supervision, European Funds and Economic Development Office)

Kopernika Street 2, 58-300 Wałbrzych, Poland

Phone: +48 74 66 55 347, +48 74 66 55 326

e-mail: [investinwalbrzych@um.walbrzych.pl](mailto:investinwalbrzych@um.walbrzych.pl)

Facebook: [www.facebook.com/investinwalbrzych](https://www.facebook.com/investinwalbrzych)

